

Arthur Rinaldi

Trio

(2003)



Arthur Rinaldi

Trio

(2003)

para flauta, oboé e clarineta em si-b

Presto

editoração de partituras

Trio – Indicações para Execução



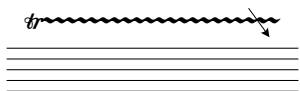
Grupo de notas extremamente rápidas



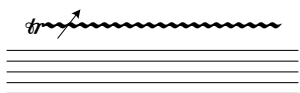
Sempre que a seta estiver no começo de um grupo há um *accelerando* até o extremamente rápido



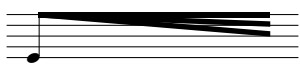
Sempre que a seta estiver no final de um grupo há um *rallentando* a partir do extremamente rápido



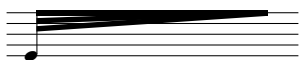
Trinado com *acellerando* no final



Trinado com *acellerando* no final



Passagem gradual de nota sustentada para frulato



Passagem gradual de frulato para nota sustentada

A peça deve ser executada quase a tempo, podendo haver pequenas diminuições do andamento quando houver apoggiaturas com maior número de notas; nesses casos o intérprete que executar essa figuração deve ditar o andamento para os outros, de modo a manter a sincronia do grupo.

Trio

(2003)

Arthur Rinaldi

♩ = 52

Flauta

Oboé

Clarineta em Si

Fl.

Ob.

Cl.

Fl.

Ob.

Cl.

rit. -----

poco accel. a tempo

rit. -----

poco accel. a tempo

rit. -----

poco accel. a tempo

[Trio]

14

Fl. *f* *mf* *p*

Ob. *f* *mf* *p*

Cl. *f* *mf* *p*

poco rit.

lunga >

18

Fl. *mf*

Ob. *mf*

Cl. *mf*

a tempo

poco rit.

21

Fl. *p* *mf*

Ob. *p* *mf*

Cl. *p* *mf*

rit. a tempo

24

Fl. *p* *mf* *mf*

Ob. *p* *mf* *fp* *mf*

Cl. *p* *mf* *f* *f*

a tempo

rit. a tempo

rit. a tempo

$\text{♩} = 160$

28

Fl. *f sf f* *mf*

Ob. *f sf mf*

Cl. *fp f sf mf*

Detailed description: This system covers measures 28 to 31. The Flute part starts with a dynamic of *f*, moves to *sf*, then *f*, and finally *mf*. It features a triplet of eighth notes in measure 29 and a triplet of sixteenth notes in measure 30. The Oboe part begins with a dynamic of *f*, then *sf*, and *mf*. It includes a triplet of eighth notes in measure 28 and another triplet in measure 30. The Clarinet part starts with a dynamic of *fp*, then *f*, *sf*, and *mf*. It has a triplet of eighth notes in measure 28 and another triplet in measure 30.

32

Fl. *fp* *mf* *p*

Ob. *mf* *p*

Cl. *mf* *p*

poco rit.

Detailed description: This system covers measures 32 to 35. The Flute part starts with a dynamic of *fp*, then *mf*, and ends with *p*. It features a triplet of eighth notes in measure 32 and a triplet of sixteenth notes in measure 33. The Oboe part begins with a dynamic of *mf* and ends with *p*. It has a triplet of eighth notes in measure 32 and a triplet of sixteenth notes in measure 33. The Clarinet part starts with a dynamic of *mf* and ends with *p*. It includes a triplet of eighth notes in measure 32 and a triplet of sixteenth notes in measure 33. A *poco rit.* marking is indicated above the Flute and Oboe staves.

37

Fl. *mf* *sf* *f*

Ob. *mf* *f*

Cl. *mf*

Glissando

Detailed description: This system covers measures 37 to 39. The Flute part starts with a dynamic of *mf*, then *sf*, and ends with *f*. It features a triplet of eighth notes in measure 37 and a triplet of sixteenth notes in measure 38. The Oboe part begins with a dynamic of *mf* and ends with *f*. It has a triplet of eighth notes in measure 37 and a triplet of sixteenth notes in measure 38. The Clarinet part starts with a dynamic of *mf* and ends with a triplet of sixteenth notes in measure 38. A *Glissando* marking is present above the Oboe staff in measure 38.

40

Fl. *sf* *mf*

Ob. *mf* *sf* *mf*

Cl. *f sf sf sf mf*

Gliss.

Detailed description: This system covers measures 40 to 43. The Flute part starts with a dynamic of *sf* and ends with *mf*. It features a triplet of eighth notes in measure 40 and a triplet of sixteenth notes in measure 41. The Oboe part begins with a dynamic of *mf*, then *sf*, and ends with *mf*. It includes a triplet of eighth notes in measure 40 and a triplet of sixteenth notes in measure 41. The Clarinet part starts with a dynamic of *f*, then *sf*, *sf*, *sf*, and ends with *mf*. It has a triplet of eighth notes in measure 40 and a triplet of sixteenth notes in measure 41. *Gliss.* markings are present above the Clarinet staff in measures 40 and 41.

44

Fl. *sf* *p cresc.*

Ob. *sf* *p cresc.* *f sf*

Cl. *sf* *p* *mf*

48

Fl. *f* *p* *mf* *f*

Ob. *sf* *mf* *p* *f* *mf*

Cl. *p* *mf*

53

Fl. *mf* *f* *fp* *fsf*

Ob. *sf* *fsf*

Cl. *sf* *mf sub.* *fsf*

57

$\text{♩} = 140$ *rit.* $\text{♩} = 52$ *a tempo*

Fl. *p* *p*

Ob. *p* *p*

Cl. *p* *p*

61

Fl. *Gliss.* *pp*

Ob. *Glissando* *pp*

Cl. *Gliss.* *pp*

68

Fl. *Gliss.* *Gliss.* *p* *mf* *p*

Ob. *ppp*

Cl. *ppp*

76

Fl. *p* *p*

Ob.

Cl.

82

Fl. *mf* *p*

Ob. *pp*

Cl. *pp*

[Trio]

85

Fl. *f* *mf* *mf* *p*

Ob. *mf* *mf* *p*

Cl. *fp* *mf*

88

Fl. *mf*

Ob. *mf* *mf*

Cl. *mf* *mf*

91

Fl. *mf*

Ob. *mf*

Cl. *fp* *p*

93

Fl. *mf* *p* *pp*

Ob. *mf* *p* *pp*

Cl. *mf* *p* *pp*

97 $\text{♩} = 48$

Fl. *p*

Ob. *p*

Cl. *p*

100

Fl. *pp*

Ob. *pp*

Cl. *pp*

104

Fl. *pp* *p* *rit.* *a tempo*

Ob. *pp* *p* *rit.* *a tempo*

Cl. *pp* *p* *rit.* *a tempo*

108

Fl. *pp* *rit.*

Ob. *pp* *rit.*

Cl. *pp* *rit.*

www.presto.mus.br
■ contato@presto.mus.br
